

FIU CONNECT

Quick Tips

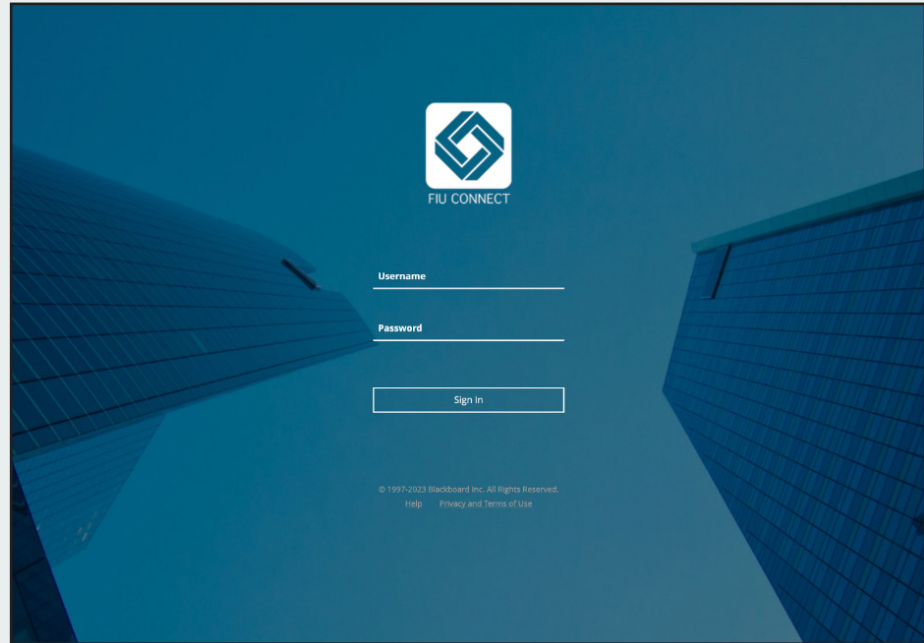
Blackboard (User Guide)



Logging In

Step one: Visit the link <https://manchestercf.blackboard.com/>.

Step two: Fill in the *Username* and *Password* that was provided then hit enter or click *Sign in*.



Step three: The default page is the *Institution Page* where you will find news about the FIU Connect platform and announcements about courses.

Institution Page

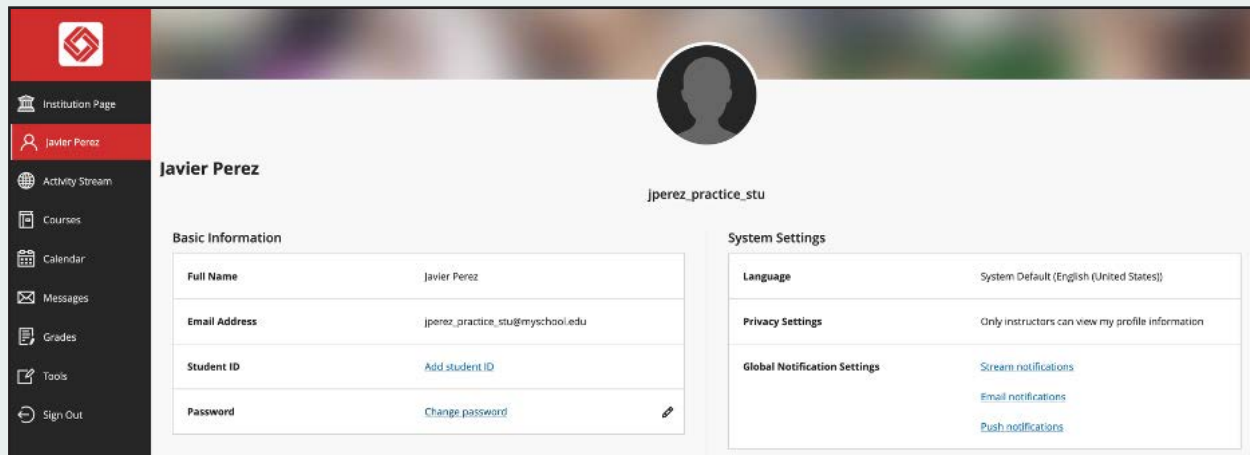
Welcome to FIU Connect!

A New FIU Connect Experience is Here

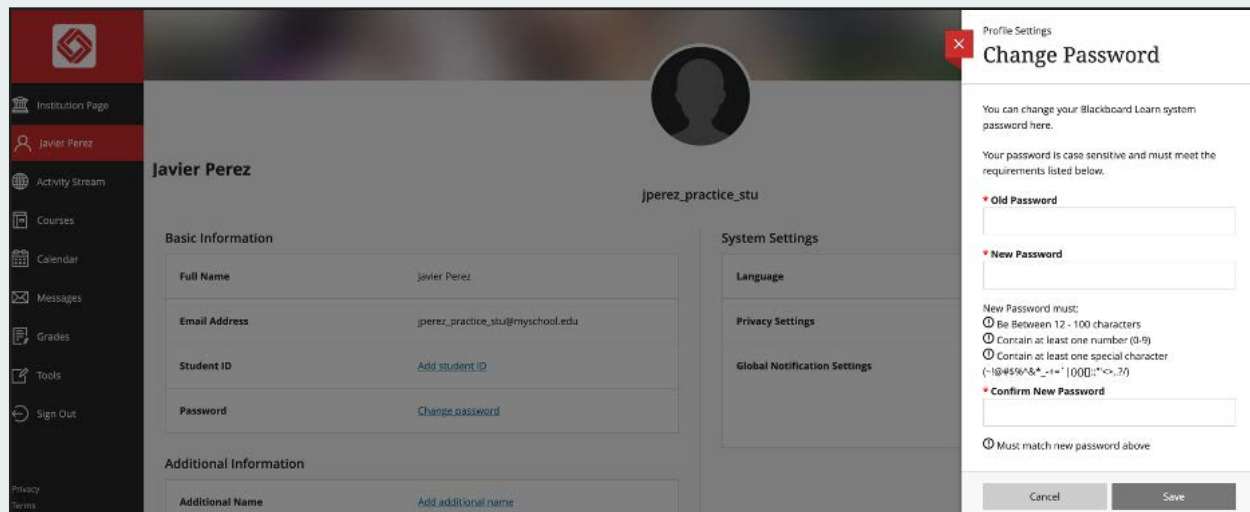
- FIU Connect Quick Tips User Guide
- Frequently Asked Questions
- About FIU Connect
- Financial Intelligence Specialist Designation
- More about ManchesterCF

Changing Your Password

Step one: From the left navigation menu, select your profile name then click on *Change Password*.



Step two: Create a new password then click *Save*.



Accessing Courses

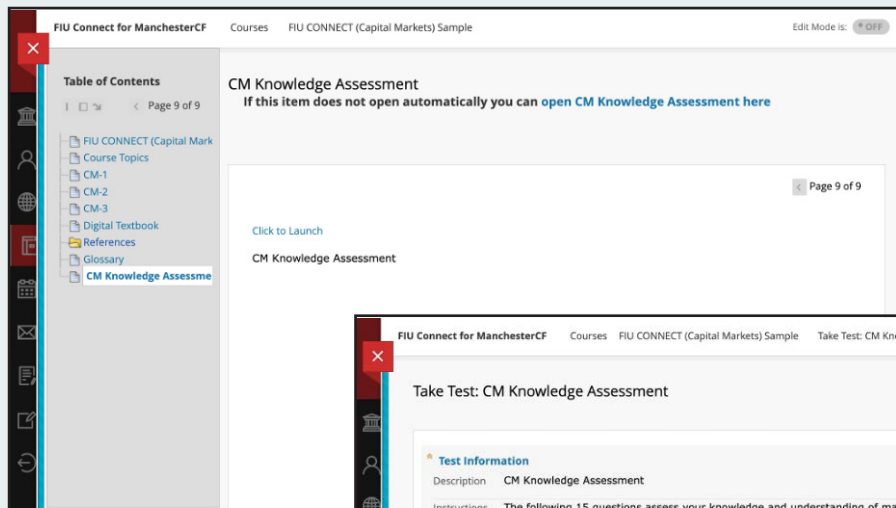
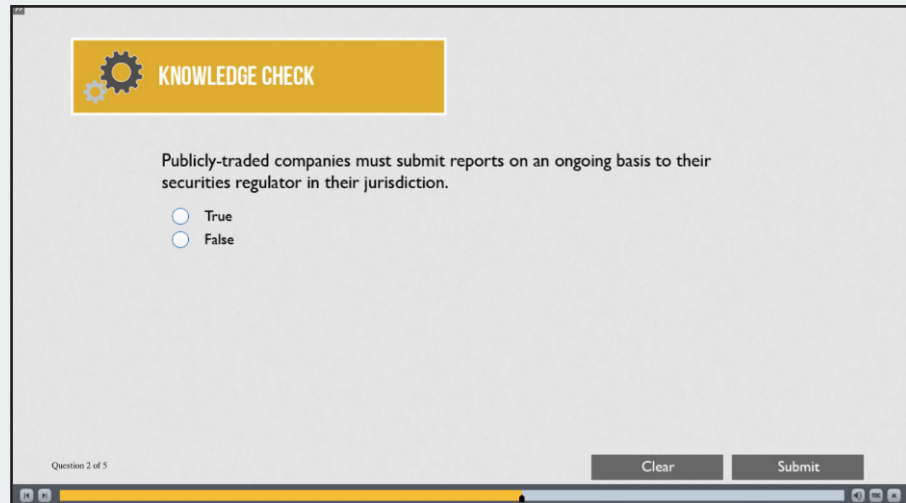
Step one: Select **Courses** from the left navigation menu. Select the course name under **Current Courses**.

Step two: Scroll down to explore the FIU Connect courses. Click on an individual course to learn more.

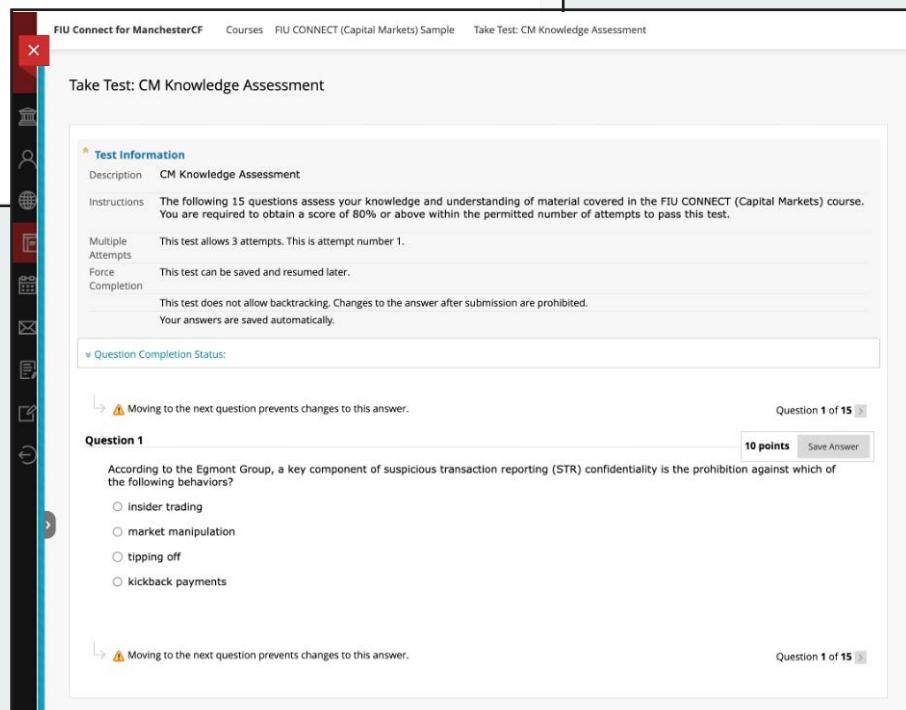
Step three: Use the **Table of Contents** to view the various learning methods available including: **Course Topics**, the computer-based training (CBT) module, the **Digital Textbook**, **References**, **Glossary** and the **Knowledge Assessment**.

Knowledge Checks and Knowledge Assessments –

FIU Connect computer-based training modules provide quick *Knowledge Checks* to help you assess how well you are grasping the content as you make your way through the course. *Knowledge Checks* are designed as self-checks only. The results of knowledge checks do not count towards your overall grade.



The *Knowledge Assessment* for the course will determine your grade and this can be found at the end of each course from the *Table of Contents* menu.



Using the Digital Textbook

Toolbar: Access the toolbar by clicking the arrow at the top of the screen.



Contents



Search



Settings

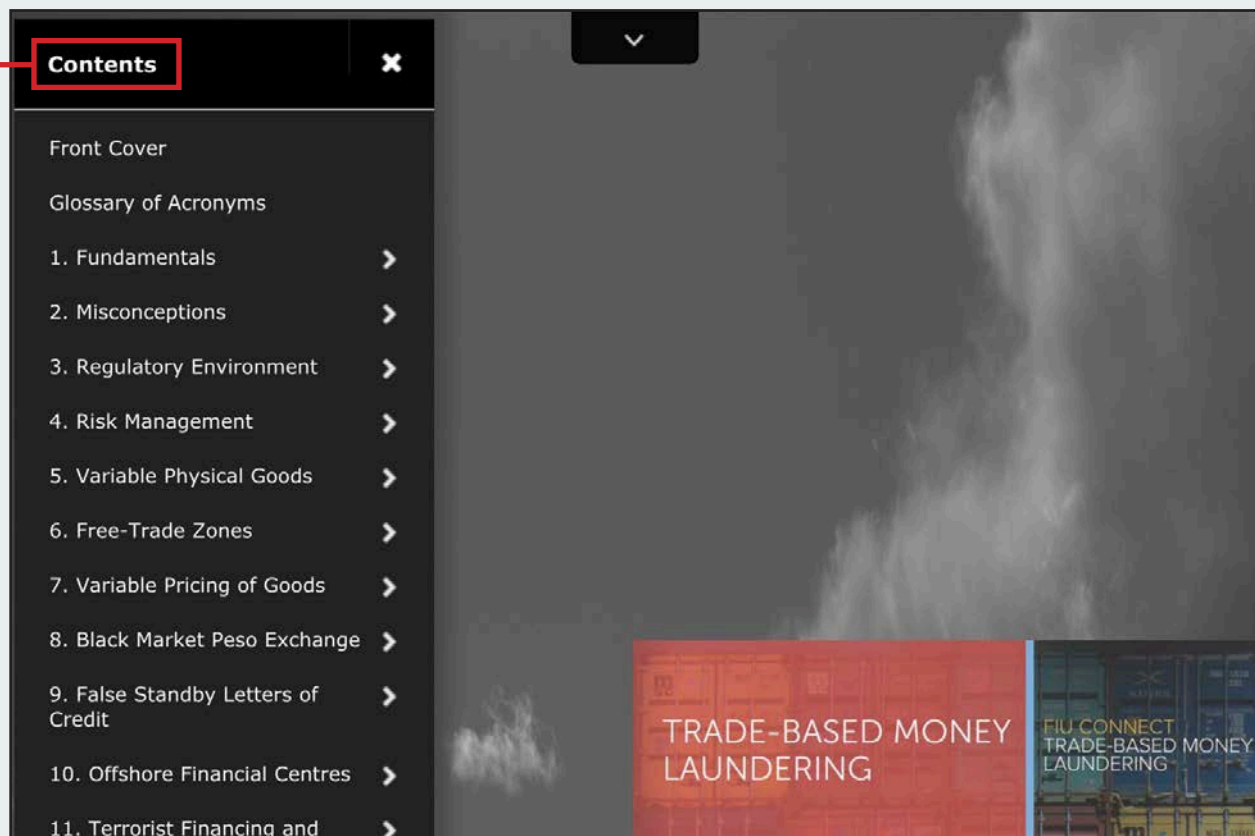


Thumbnails

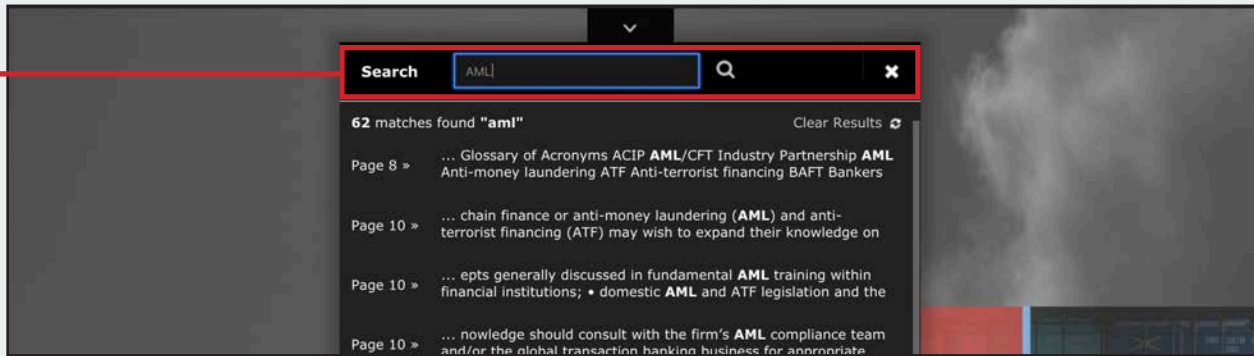


Exit

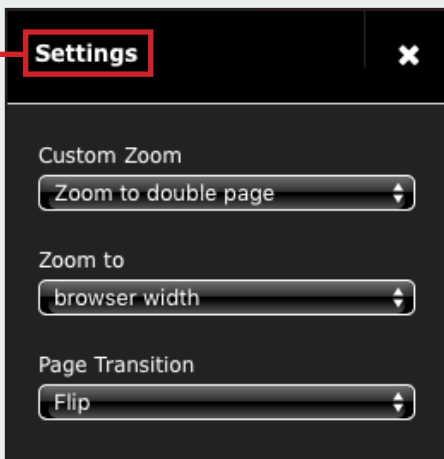
Contents: Access the chapters and subsections listed under *Contents*.



Search: Type a term into the *Search* field then click on the word or phrase to be taken to the page.



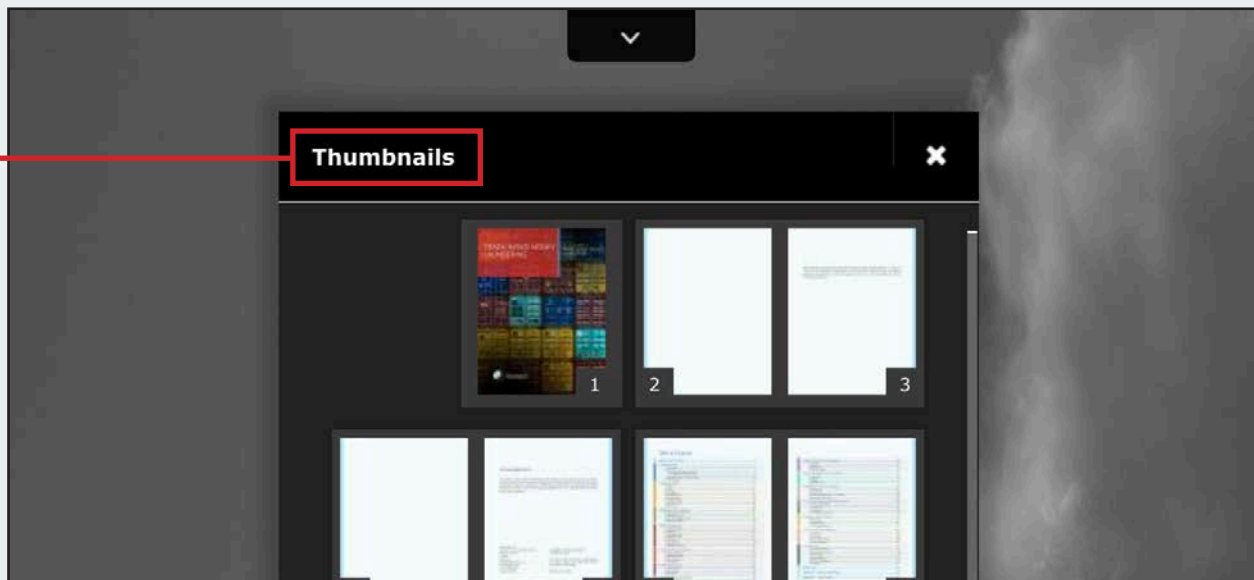
Settings: Select *Settings* to change your view preferences.



Zoom:

You can zoom in and out of the page by double clicking on the area you want to enlarge.

Thumbnails: Scan through the thumbnail images then click the page you wish to see.



ManchesterCF
Suite 501, 125-720 King St. West
Toronto, Ontario, Canada
M5V 3S5
info@manchestercf.com
manchestercf.com
+1.416.388.6051
@ManchesterCF

Copyright © 2023 ManchesterCF
All rights reserved.

No part of this text may be
reproduced or copied without
the expressed written permission
of the author.



ManchesterCF
Financial Intelligence